

"Kamua, ka muri"

REFLECTING ON THE PAST YEAR TO PLAN FOR THE YEAR AHEAD



KURA KAI

CARING FOR OUR COMMUNITY



Our Year in Review – FY24

NGĀ KAI O ROTO

CONTENTS

A Message from our General Manager Pg **3**

Our Kura Kai Rōpū (Team) Pg **4**

Our Partnered High Schools| Pg **5**

Our Kura Kai Coordinators | Pg **6**

Our Impact | Pg **7-8**

Our 4 Focus Areas | Pg **9-12**

Our Tohu | Pg **13**

Testimonials | Pg **14**

Our Key Partners | Pg **15**

Our Key Funders | Pg **16**

Sharing our Kaupapa | Pg **17-18**

Te Mutunga (end) | Pg **19**





A MESSAGE FROM OUR KAIWHAKAHAERE MATUA

It was an absolute pleasure to pull together our first ever, “Year in Review Pānui/Report” and reflect on the growth of Kura Kai. What makes our mahi, our work so special is our team. We are made up of many; volunteers, teaching staff, students, partners, funders and supporters all who, are the backbone of our charity – our “Kura Kai whānau”.

We take pride in being a Grassroots Charity – a charity at the heart of our hapori/communities and never want to lose sight of this. We know we can make a direct impact at this level. To achieve this, a key focus is removing the “red tape” so people can easily support and mould Kura Kai to their community or schools values. We are here to provide the framework and tautoko/support – the rest is up to our “Kura Kai whānau” who paddle our waka in the right direction.

On a day to day basis our team works away in their regional community pockets, and this report allows us to see the impact all of their efforts are having across the motu.

Ngā mihi nui ki a koutou katoa – *Marie Paterson (General Manager)*



OUR KURA KAI RŌPŪ (TEAM)

“

MAKAIA CARR



Founder and Trustee

I am so proud of the impact Kura Kai has had on many rangatahi, their whānau and the wider community. The root of our kaupapa, when Kura Kai was founded 4 years ago was not just to help get kai to others that needed some extra support, but was also to do what we could to keep our rangatahi in school working on their education. During a time where so many families were struggling with added financial pressures, many of our kids were leaving school far too early to go out to work, help pay the bills and put food on the table. Some of the support we have provided as a charity has meant relief in many homes, allowing our rangatahi to stay in school and prioritise their education.

We would not have been able to achieve wins like this without our incredible team of volunteers, funding partners, kura and our incredible GM, Marie Paterson. Here's to another year of caring for our community."

”

“

Kura Kai has held a place in my heart since the very beginning when I came on board as a volunteer coordinator in 2020 but becoming part of the team in 2023, and being able to have a direct input into how we share our kaupapa through our stories has really cemented my feelings about what we do. Over the past 12 months, we have seen and shared some amazing mahi – from our hardworking volunteers, partners and supporters through to the kaiko (teachers) that are on the ground working with us to distribute meals to rangatahi and their whānau, every single hand has played a part in our journey to make a difference through our kaupapa here in Aotearoa.

Times are becoming even tougher for rangatahi and their whānau and I have no doubt that we will see even more need for our meals across the motu in the coming year. But the more we work together, the greater difference we can make – one meal at a time.

KATIE THOMAS



Engagement Manager

”

“

JASON LOUGHER



Trustee

In the midst of a challenging year highlighted by a cost of living crisis and increased financial strain on families, the demand for our services has reached unprecedented levels. Many of our young people, weighed down by economic pressures, were at risk of dropping out of school prematurely to help support their families. However, through our interventions, we've been able to offer vital assistance, alleviating some of the financial burdens on families and helping our youth to stay in school, placing their education as a priority.

None of these accomplishments would have been attainable without the steadfast dedication of our volunteers, the generous support of our funding partners, the cooperation of local schools, and the exceptional leadership of our General Manager, Marie Paterson. It is their combined commitment that has propelled our success and empowered us to create a significant impact in the lives of those we serve.

”

OUR PARTNERED KURA | HIGH SCHOOLS

NORTHLAND

1. Whangārei Girls College

AUCKLAND

1. Mahurangi College
2. Ormiston Junior College
3. De La Salle College
4. Manurewa High School
5. Papakura High School
6. James Cook High School
7. Aorere College

WAIKATO/TAUPŌ

1. Te Aroha College
2. Fraser High School
3. Putāruru High School
4. Rototuna Senior High School

TAURANGA

1. Tauranga Girls College
2. Mount Maunganui College
3. Pāpāmoa College
4. Ōtūmoetai College
5. Aquinas College
6. Katikati College
7. Te Puke High School
8. BOP Youth Development Trust

BAY OF PLENTY

1. Western Heights High School
2. Tarawera High School
3. Ōpōtiki College

HAWKES BAY/WAIRARAPA

1. Central Hawkes Bay College
2. Napier Boys High School
3. Kuranui College

TARANAKI

1. Taranaki Boys High School
2. Spotswood College

WELLINGTON

1. Aotea College
2. Porirua College
3. Mana College
4. Bishop Viard College
5. Te Kura Māori o Porirua
6. Naenae College
7. Wainuiomata High School

MARLBOROUGH

1. Marlborough Girls College

CHRISTCHURCH

1. Haeta Community Campus
2. Rolleston College

DUNEDIN

1. Trinity College
2. Queens High School



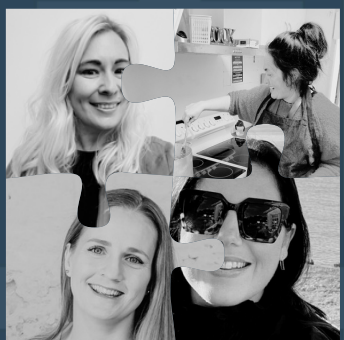
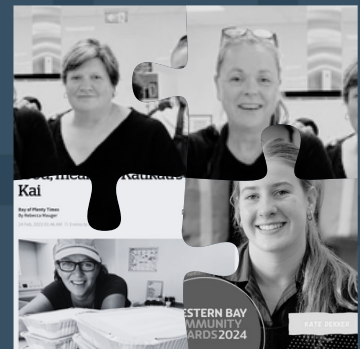
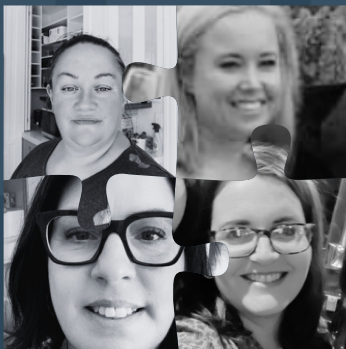
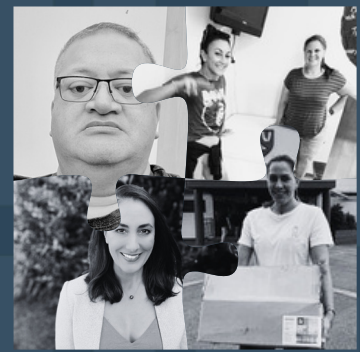
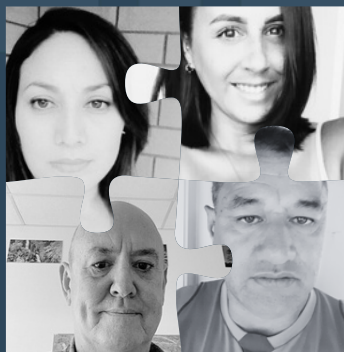
Kura Kai Coordinators

Our wonderful team of 37 Kura Kai Volunteer Coordinators help ensure the smooth running of communications and operations for Kura Kai volunteers and our partnered High Schools across Aotearoa.

Our home based volunteer coordinators will open their homes to receive and store meal drop offs from our volunteers every week. They build strong relationships and liaise with the schools on how the freezers are looking, any feedback on meals and post in the group when the next round of meals will be needed.

Our school based Volunteer Coordinators are key in engaging their taura/students to cook meals as well as their learnings around helping others and role Kura Kai plays in their school and community.

They are the important pieces to our puzzle!



31
Kura Kai
Coordinators



OUR IMPACT



40

PARTNERED HIGH SCHOOLS



1000'S

VOLUNTEERS NATIONWIDE



16,000+

MEALS DELIVERED OVER THE YEAR



1000'S

**OF RANGATAHI AND WHĀNAU
HAVING FULL PUKU**



**CONNECTIONS BETWEEN
AOTEAROA BUSINESSES TO
WHĀNAU IN NEED**



**HOSTING OUR LARGEST
KURA KAI FUNDRAISING EVENT**



OUR IMPACT

FY 24



\$31,000

DONATIONS



\$57,000

FUNDING SUPPORT



\$30,000

Kura Kai Charity Event



\$10,000

MEAL PACKAGING PROVIDED



\$28,000 +

SUPPORT TO OUR
VOLUNTEERS/SCHOOLS



\$5,700

FREEZERS

OUR FOUR POU | KEY FOCUS AREAS

Kura Kai



Response to poverty and emergency

We aim to help improve food access for our vulnerable communities by;

- Donating chest freezers to high schools that we partner with. We have donated over 40 chest freezers.
- This past year we have donated over \$18,000 in grocery vouchers to support our schools and key volunteers to purchase ingredients to help fill Kura Kai freezers.
- Building a network of volunteers, students and community groups who cook nutritious family meals to keep the freezers well stocked up.
- Providing easily accessible meals – no waiting times through social agencies.
- Distributing the meals to support rangatahi and their whānau.



OUR FOUR POU| KEY FOCUS AREAS



Empowering Rangatahi (Youth)

We choose to support secondary schools because we know how important a completed secondary education is to the future of our rangatahi. We do this by;

- Engaging youth through our Kura Kai Rangatahi Programme. We piloted our Kura Kai Rangatahi initiative in 2020 and are now successfully rolling this out in 20 of our partnered schools.
- Supporting the advancement of education by providing nutrition and fuel to support student motivation and mental wellbeing.
- Celebrating successes including Isla Willacy and Kate Dekker being nominated for the Youth Spirit Award in the WBOP Community Awards, and Kate winning this category.



OUR FOUR POU | KEY FOCUS AREAS

Koru



Community Engagement

- Providing a platform where schools, rangatahi, elderly, volunteers, iwi and community organisations can come together and support their hapori (community) - whakawhanaunganga.
- Sharing our Kura Kai stories to highlight the positive impact. Our reach over this past year on Facebook is 156.4K and 21K through instagram.
- Bringing awareness to our communities around poverty and the need.
- Connecting communities through Kura Kai.



OUR FOUR POU | KEY FOCUS AREAS

Whā



Kaupapa Maori Values

Kaupapa Māori values are an important foundation of Kura Kai. We align to these values through;

- Our vision and purpose.
- Shared understanding with our Trustees, volunteers and partners.
- Connections with iwi and organisations that support Māori for example the Maori Wardens in Auckland who volunteer to be our mobile coordinators, collecting and dropping off meals.
- Aligning our programme to the 'Tapa Whā' model of Health.



OUR KURA KAI TOHU (LOGO)

This logo concept was predominantly inspired by Pātaka Kai, the Māori term for a food storehouse. Nowadays, the name is well recognised thanks to The Open Street Pantry Movement, which is a resident led, grassroots, crowd sourced solution to immediate and local need, rescuing food and encouraging the co-sharing between neighbours to strengthen communities. We believe that Kura Kai also encompasses such values and that this symbol was very fitting for your organisation.



“Manaakitanga” plays a key role in Māori society and is also very reflective of the Kura Kai goal.

Manaakitanga encompasses reciprocal hospitality and respect from one individual or group to another.

It also acknowledges the mana of others as having equal or greater importance than your own, through the expression of aroha, hospitality, generosity and mutual respect.

With our manaakitanga design we wanted to ensure that it reinforced the idea of equality and people working together to move onwards and upwards and achieve a common goal.

We also wanted to touch on the more literal sense of Kura Kai by making the “manaakitanga” symbol look like a tree growing from the earth.

KURA KAI

AOTEAROA

“Your team of volunteers are amazing and we appreciate them so much. Thank you for all you are doing to keep our students and families supported. A warm meal goes a long way to bring comfort and a smile to their faces amongst the everyday challenges some of them face”.

- **Principal**



“

I feel so humble being a part of Kura Kai. As a **teacher**, I'm there at school connecting with students daily, what a bloody big turn around of engagement, trust and attendance!

”

“

We have a growing number of whānau in emergency accommodation. Motels in Porirua don't have great cooking facilities. The kids are like wow real food!

- **Volunteer**

“

Mother of 7 and grandmother of two and a half moko. I love that I can give back to our tamariki/rangatahi and community by providing yummy meals.

- **Volunteer**



OUR KEY PARTNERS

AsureQuality – Kaitiaki Kai

September marked our 1-year partnership with AsureQuality, who generously support Kura Kai through their Employee Volunteer Programme. Staff raise funds, cook meals, create innovative resources and help share our kaupapa across Aotearoa.

AsureQuality's contributions make a huge difference in the lives of rangatahi and their whānau and we feel lucky to have such a large organisation like them so actively involved. To the AsureQuality staff who have contributed over this past year, ka rawe and thank you!

Farmer Autovillage

We were fortunate to be supported for a second year by Mike, Samantha, Martin, Jim and the rest of the team at Farmer Autovillage giving us the ability to do more of the mahi we love with rangatahi, kura, whānau and communities that are truly benefiting from our kaupapa.



Ngā mihi nui

KEY FUNDERS



Lottery Grants Board
Te Puna Tahua
.....
LOTTO FUNDS FOR YOUR COMMUNITY

foodstuffs NORTH ISLAND



TECT



ANZ  Staff Foundation

Fonterra
Doing
Good
Together



SHARING OUR KAUPAPA

KURA KAI CHARITY EVENT



2023 saw Kura Kai host our largest annual charity event raising \$30,000 and creating national awareness of our kaupapa! This event's success could not have been achieved without business and community support.



KURA KAI MATARIKI CAMPAIGN



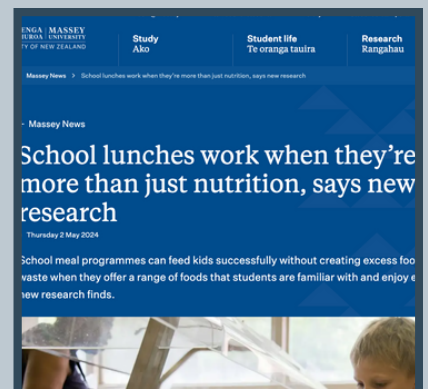
We launched our annual Matariki Campaign for a second year and saw a big increase in engagement from organisations, schools and volunteers all coming together to cook for Kura Kai throughout the month of June.



AOTEAROA NEW ZEALAND FOOD CULTURES PROJECT WITH KURA KAI



Kura Kai was involved in a Massey Research programme where they met with our volunteers, teachers and partners to understand the many layers of Kura Kai and our impact. The research team plan to liaise with government groups such as the Healthy Families NZ programme at the Ministry of Health, so that they can better tailor their community health and education-based food programmes.



SHARING OUR KAUPAPA

FINDING OUR GEMS!



Our highest reach Social Media post of the year!

Our Queen Bee – Marion Topping who has been busy cooking away in her own home to help make meals and to date, she has made 2000 plus meals for Kura Kai – Katikati. Marion stumbled upon Kura Kai by coming along to one of the Katikati Community Cooks and she hasn't looked back!



KURA KAI RANGATAHI



Our Kura Kai Rangatahi initiative moves close to where our heart and purpose is; empowering our rangatahi.

Students can be involved in cooking meals right through to coordinating Kura Kai within their school. Integrating the program into the wider life and culture of schools has many benefits.



FOOD RESCUE + PRODUCT DONATIONS



We are able to full more puku and freezers with the support from donations!

Food Rescue and ensuring no food goes to waste is key!

Kura Kai can find a home for everything!



**Na to rourou,
na taku rourou
ka ora ai te iwi**



With your food basket
and my food basket the
people will thrive

